

# "Support Team Dashboard"

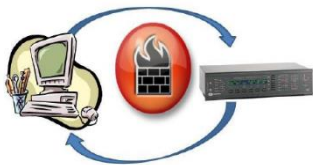
In Partnership with



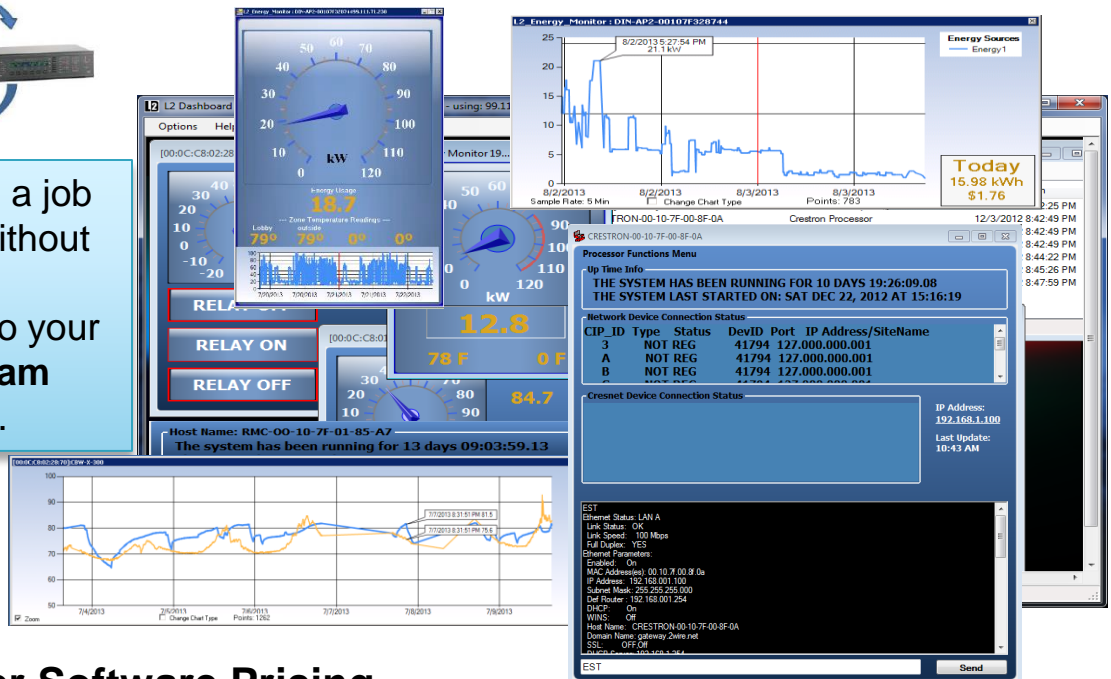
The Support Team Dashboard is the premier solution for monitoring critical customer equipment by your Support Team. Always know the status of Crestron gear, Rack/Room Temperatures and Energy usage. New features added continuously and automatically upgraded to your software.

## Benefits Include;

- ✓ Full Crestron Toolbox Support.
- ✓ Real-time Status of customer systems behind firewalls.
- ✓ New Service Revenues.
- ✓ Remote Diagnostics.
- ✓ Closer relationship with high value customers.
- ✓ Remote Control of Equipment and tracking of environment.
- ✓ Support Desk's Best Friend.



Never leave a job site again without Linking the equipment to your **Support Team Dashboard**.



## Dealer Software Pricing (50% MSRP)

- Monitor 2 devices –
- Up to 8 devices -
- Up to 16 devices -
- Up to 32 devices -
- Up to 100 devices -

no charge

\$299 yr.

\$399 yr.

\$499 yr.

\$999 yr.



Ideal for Digital Signage Applications

[www.Linkedin2Software.com](http://www.Linkedin2Software.com)